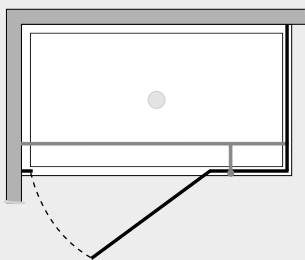


# Smart

*Doppio lato fisso c/porta e profilo di batt. (comp. ad angolo)*



SMPOX+RCPFBT



## Caratteristiche prodotto

- CABINA DOCCIA MODELLO SMART
- SERIE MINIMAL (SENZA TELAIO)
- PORTA CON APERTURA SOLO ESTERNA CON CERNIERE VETRO-VETRO
- CHIUSURA MAGNETICA CON PROFILO ALLUMINIO



- LARGHEZZA 80 > 120 cm.
- PROFONDITA' 70 > 120 cm.
- ALTEZZA DI SERIE 198 cm. (MAX 198 cm.)



- ESTENSIBILITA' 0 mm. (larghezza) 30 mm. (profondita')



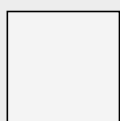
- SPESSORE VETRO 6 mm.



## *Finiture Profili*



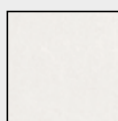
EXTRABRILL



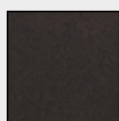
BIANCO  
LUCIDO



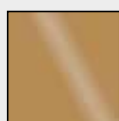
EFF. INOX  
SPAZZOLATO



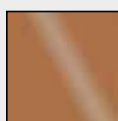
BIANCO  
MATERICO



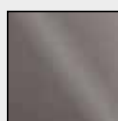
NERO  
MATERICO



ORO



RAME



TITANIO

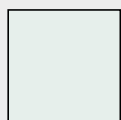


BIANCO  
PERLATO



MAZZETTA  
IDEAGROUP

## *Finiture Vetri*



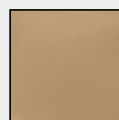
TRASPARENTE



CINCILLÀ



SATINATO



BRONZO



FUMÈ



EXTRACHIARO

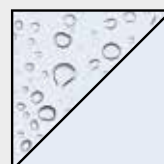
## *Lavorazioni speciali*



SERIGRAFIA 1



SERIGRAFIA 2



SGG TIMELESS®