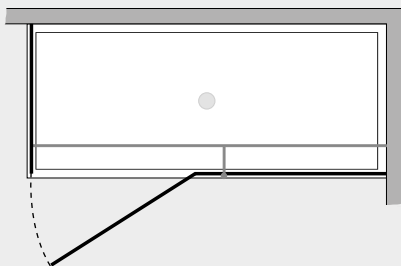


Smart *P. battente c/lato fisso (comp. ad angolo)*



SMPO + SMFI



Caratteristiche prodotto

- CABINA DOCCIA MODELLO SMART
- SERIE MINIMAL (SENZA TELAIO)
- PORTA CON APERTURA SOLO ESTERNA CON CERNIERE VETRO-VETRO
- CHIUSURA MAGNETICA CON PROFILO ALLUMINIO



- LARGHEZZA 80 > 120 cm.
- PROFONDITA' 20 > 120 cm.
- ALTEZZA DI SERIE 198 cm. (MAX 198 cm.)



- ESTENSIBILITA' 30 mm.



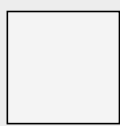
- SPESSORE VETRO 6 mm.



Finiture Profili



EXTRABRILL



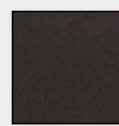
BIANCO
LUCIDO



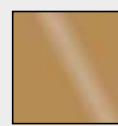
EFF. INOX
SPAZZOLATO



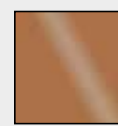
BIANCO
MATERICO



NERO
MATERICO



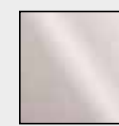
ORO



RAME



TITANIO

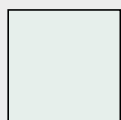


BIANCO
PERLATO



MAZZETTA
IDEAGROUP

Finiture Vetri



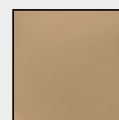
TRASPARENTE



CINCILLÀ



SATINATO



BRONZO



FUMÈ



EXTRACHIARO

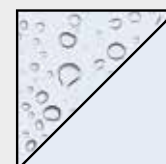
Lavorazioni speciali



SERIGRAFIA 1



SERIGRAFIA 2



SGG TIMELESS®