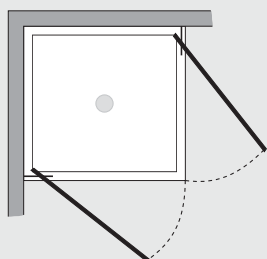


Slim P. doppio battente (comp. ad angolo)



Caratteristiche prodotto

SLP0x2



- CABINA DOCCIA MODELLO SLIM
- SERIE MINIMAL (SENZA TELAIO)
- PORTA CON APERTURA SOLO ESTERNA A BILICO
- CHIUSURA MAGNETICA CON PROFILO ALLUMINIO



- LARGHEZZA 67 > 100 cm.
- PROFONDITA' 67 > 100 cm.
- ALTEZZA DI SERIE 198 cm. (MAX 198 cm.)



- ESTENSIBILITA' 30 mm.



- SPESSORE VETRO 6 mm.



Finiture Profili



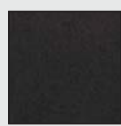
EXTRABRILL



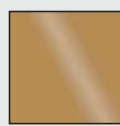
EFF. INOX
SPAZZOLATO



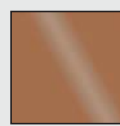
BIANCO
MATERICO



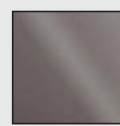
NERO
MATERICO



ORO



RAME



TITANIO



BIANCO
PERLATO



MAZZETTA
IDEAGROUP

Finiture Vetri



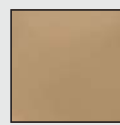
TRASPARENTE



CINCILLÀ



SATINATO



BRONZO



FUMÈ



EXTRACHIARO

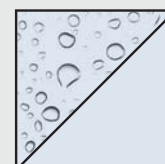
Lavorazioni speciali



SERIGRAFIA 1



SERIGRAFIA 2



SGG TIMELESS®