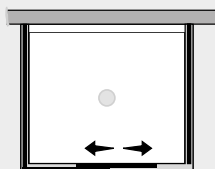


Space

Porta scor. su fisso c/2 lati fissi (comp. ad angolo)



SCFX+SCPO+SCFI



Caratteristiche prodotto

- CABINA DOCCIA MODELLO SPACE
- SERIE FRAME (CON TELAIO)
- PORTA SCORREVOLE CON MECCANISMO DI SGANCIO E SISTEMA SOFT-CLOSE
- CHIUSURA MAGNETICA CON PROFILO ALLUMINIO



- LARGHEZZA 97 > 180 cm.
- PROFONDITA' 27 > 120 cm.
- ALTEZZA DI SERIE 205 cm. (MAX 220 cm.)



- ESTENSIBILITA' 20 mm.



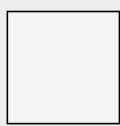
- SPESSORE VETRO 8 mm.



Finiture Profili



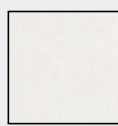
EXTRABRILL



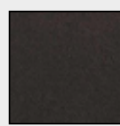
BIANCO
LUCIDO



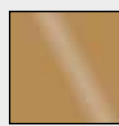
EFF. INOX
SPAZZOLATO



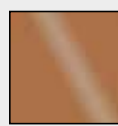
BIANCO
MATERICO



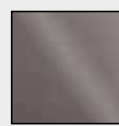
NERO
MATERICO



ORO



RAME



TITANIO

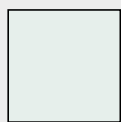


BIANCO
PERLATO



MAZZETTA
IDEAGROUP

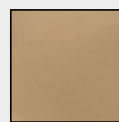
Finiture Vetri



TRASPARENTE



SATINATO



BRONZO



FUMÈ



EXTRACHIARO

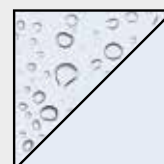
Lavorazioni speciali



SERIGRAFIA 1



SERIGRAFIA 2



SGG TIMELESS®