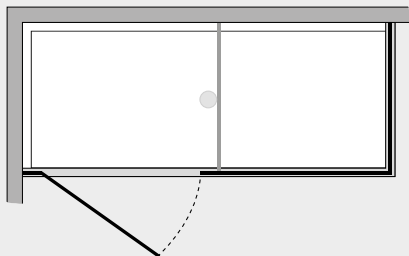


Project P. battente in linea c/doppio lato fisso (comp.)



PRJCML6-8+PRJ2F6-8



Caratteristiche prodotto

- CABINA DOCCIA MODELLO PROJECT
- SERIE MINIMAL (SENZA TELAIO)
- PORTA CON AP. ESTERNA CON CERN. MURO-VETRO (A RICHIESTA ANCHE INTERNA)
- CHIUSURA MAGNETICA CON PROFILO ALLUMINIO



- LARGHEZZA 40 > 160 cm. (6mm.) e 40 > 200 cm. (8mm.)
- PROFONDITA' 20 > 100 cm. (6mm.) e 20 > 120 cm. (8mm.)
- ALTEZZA DI SERIE 198 cm. (MAX 220 cm.)



- ESTENSIBILITA' 0 mm. (larghezza) 25 mm. (profondita')



- SPESSORE VETRO 6-8 mm.



Finiture Profili



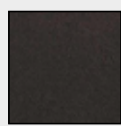
EXTRABRILL



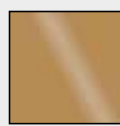
EFF. INOX
SPAZZOLATO



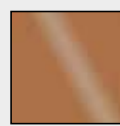
BIANCO
MATERICO



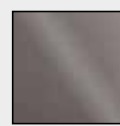
NERO
MATERICO



ORO



RAME



TITANIO

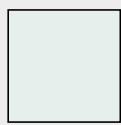


BIANCO
PERLATO



MAZZETTA
IDEAGROUP

Finiture Vetri



TRASPARENTE



SATINATO



BRONZO



FUMÈ



EXTRACHIARO

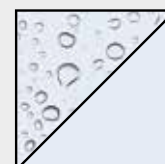
Lavorazioni speciali



SERIGRAFIA 1



SERIGRAFIA 2



SGG TIMELESS®