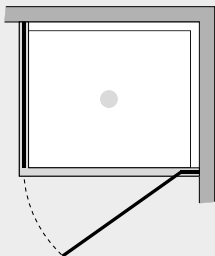


Project P. battente c/lato fisso (comp. ad angolo)



PRJCM06-8+PRJFI6-8



Caratteristiche prodotto

- CABINA DOCCIA MODELLO PROJECT
- SERIE MINIMAL (SENZA TELAIO)
- PORTA CON APERTURA ESTERNA CON CERNIERE MURO-VETRO
- CHIUSURA MAGNETICA CON PROFILO ALLUMINIO



- LARGHEZZA 40 > 90 cm.
- PROFONDITA' 20 > 160 cm.
- ALTEZZA DI SERIE 198 cm. (MAX 220 cm.)



- ESTENSIBILITA' 0 mm. (larghezza) 25 mm. (profondita')



- SPESSORE VETRO 6-8 mm.



Finiture Profili



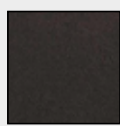
EXTRABRILL



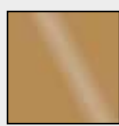
EFF. INOX
SPAZZOLATO



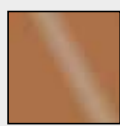
BIANCO
MATERICO



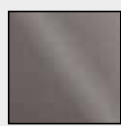
NERO
MATERICO



ORO



RAME



TITANIO

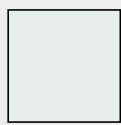


BIANCO
PERLATO



MAZZETTA
IDEAGROUP

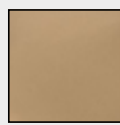
Finiture Vetri



TRASPARENTE



SATINATO



BRONZO



FUMÈ



EXTRACHIARO

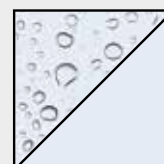
Lavorazioni speciali



SERIGRAFIA 1



SERIGRAFIA 2



SGG TIMELESS®