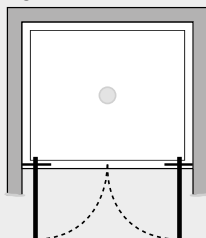


# *Luce* Porta doppio battente (in nicchia)



## *Caratteristiche prodotto*

LC2P



- CABINA DOCCIA MODELLO LUCE
- SERIE MINIMAL (SENZA TELAIO)
- PORTA BATTENTE CON APERTURA SOLO ESTERNA
- CHIUSURA MAGNETICA CON PROFILO ALLUMINIO



- LARGHEZZA 100 > 180 cm.
- ALTEZZA DI SERIE 205 cm. (MAX 205/240 cm.)



- ESTENSIBILITA' 20 mm.



- SPESSORE VETRO 8 mm.



## *Finiture Profili*



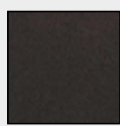
EXTRABRILL



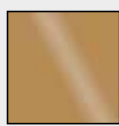
EFF. INOX  
SPAZZOLATO



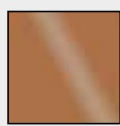
BIANCO  
MATERICO



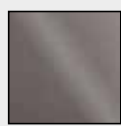
NERO  
MATERICO



ORO



RAME



TITANIO

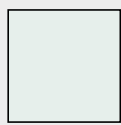


BIANCO  
PERLATO

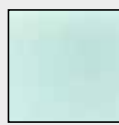


MAZZETTA  
IDEAGROUP

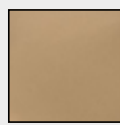
## *Finiture Vetri*



TRASPARENTE



SATINATO



BRONZO



FUMÈ



EXTRACHIARO

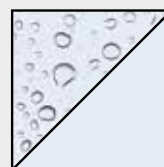
## *Lavorazioni speciali*



SERIGRAFIA 1



SERIGRAFIA 2



SGG TIMELESS®