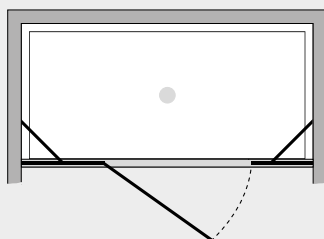


# *Flipper* P. battente c/fisso in linea (nicchia)



## *Caratteristiche prodotto*

FLFPF



- CABINA DOCCIA MODELLO FLIPPER
- SERIE MINIMAL (SENZA TELAIO)
- PORTA CON APERTURA SOLO ESTERNA CON CERNIERE VETRO-VETRO
- CHIUSURA MAGNETICA CON GUARNIZIONE IN SILICONE TRASPARENTE



- LARGHEZZA 87 > 160 cm.
- ALTEZZA DI SERIE 198 cm. (MAX 198 cm.)



- ESTENSIBILITA' 25+25 mm.



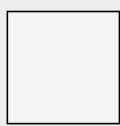
- SPESSORE VETRO 6 mm.



## *Finiture Profili*



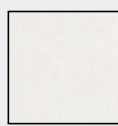
EXTRABRILL



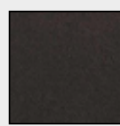
BIANCO  
LUCIDO



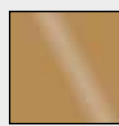
EFF. INOX  
SPAZZOLATO



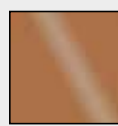
BIANCO  
MATERICO



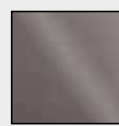
NERO  
MATERICO



ORO



RAME



TITANIO

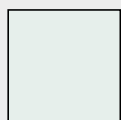


BIANCO  
PERLATO



MAZZETTA  
IDEAGROUP

## *Finiture Vetri*



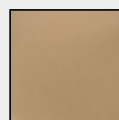
TRASPARENTE



CINCILLÀ



SATINATO



BRONZO



FUMÈ



EXTRACHIARO

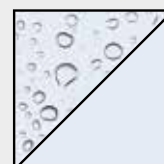
## *Lavorazioni speciali*



SERIGRAFIA 1



SERIGRAFIA 2



SGG TIMELESS®