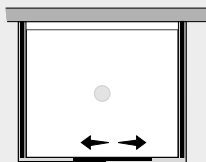


Focus P. scorrevole su fisso c/2 lati fissi (comp. ad angolo)



FCPO+FCFI+FCFX



Caratteristiche prodotto

- CABINA DOCCIA MODELLO FOCUS
- SERIE FRAME (CON TELAIO)
- PORTA SCORREVOLE CON MECCANISMO DI SGANCIO E SISTEMA SOFT-CLOSE
- CHIUSURA MAGNETICA CON PROFILO ALLUMINIO



- LARGHEZZA 97 > 180 cm.
- PROFONDITA' 27 > 120 cm.
- ALTEZZA DI SERIE 198 cm. (MAX 198 cm.)



- ESTENSIBILITA' 20 mm.



- SPESSORE VETRO 6 mm.



Finiture Profili



EXTRABRILL



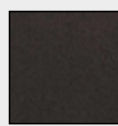
BIANCO
LUCIDO



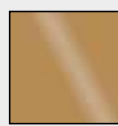
EFF. INOX
SPAZZOLATO



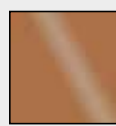
BIANCO
MATERICO



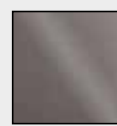
NERO
MATERICO



ORO



RAME



TITANIO

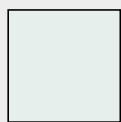


BIANCO
PERLATO



MAZZETTA
IDEAGROUP

Finiture Vetri



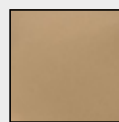
TRASPARENTE



CINCILLÀ



SATINATO



BRONZO



FUMÈ



EXTRACHIARO

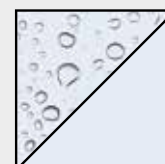
Lavorazioni speciali



SERIGRAFIA 1



SERIGRAFIA 2



SGG TIMELESS®